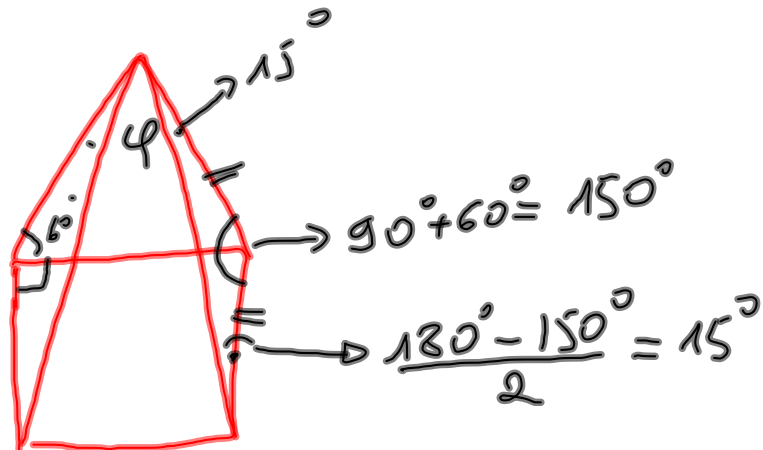
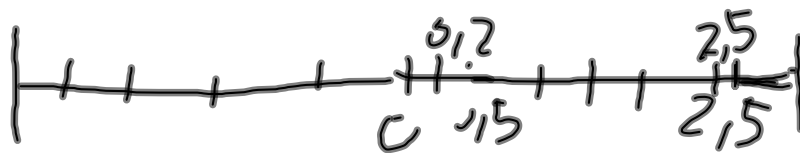


(11)



(12)



0,5 2,5) 1/5 5/2

(13)

$$\begin{aligned}
 4,5 \cdot 10^{-6} &\rightarrow 10^{-6} \\
 7 \cdot 10^{-6} &\rightarrow 10 \cdot 10^{-6} = 10^{-5} \\
 0,000009 &\rightarrow 9 \cdot 10^{-6} \rightarrow 10^{-5} \\
 510 &\rightarrow 10^3 \\
 0,02 &\rightarrow 2 \cdot 10^{-2} \rightarrow 10^{-2} \\
 470.000 &\rightarrow 4,7 \cdot 10^5 \rightarrow 10^5
 \end{aligned}$$